

Important: This tutorial is intended for RainMachine 1st gen (2013) model, for the newer version of RainMachine devices (2015 models) there is no need to setup port forwarding, please read the online manual.

Port Forwarding the Apple AirPort Extreme Router using AirPort Utility v6.x

Port Mapping Setup

To setup port mapping on an 802.11n AirPort Express Base Station (AXn), connect to the base station's wireless network. For either the 802.11n AirPort Extreme Base Station (AEBSn) or Time Capsule (TC) you can connect to either the base station's wireless network or temporarily connect directly, using an Ethernet cable, to one of the base station's LAN (opposing arrows) ports, and then use the AirPort Utility, in Manual Setup, to make these settings:

Note: To open AirPort Utility v6.x on your OS X computer - open Finder - then go to Application folder - then go to Utilities folder - here you'll find AirPort Utility application (see figure 1) - double click to open it.

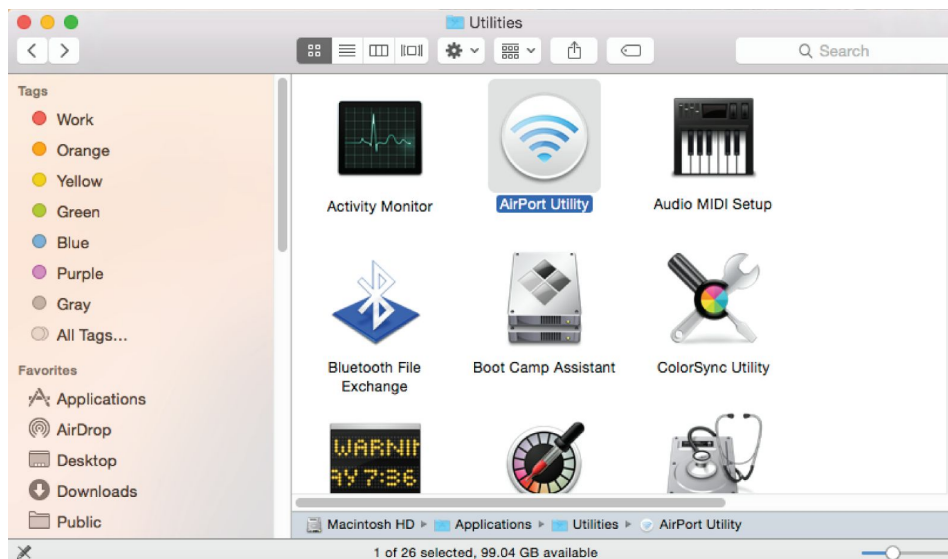


figure 1

Step 1

Reserve a DHCP-provided IP address for the host device.

(Note this is the device that you want to access from a remote location.)

AirPort Utility > Select the base station > Edit > Network tab

Verify that the **Router Mode: DHCP and NAT**

Click the Add **+** button under **DHCP Reservations:**

(see figure 2)

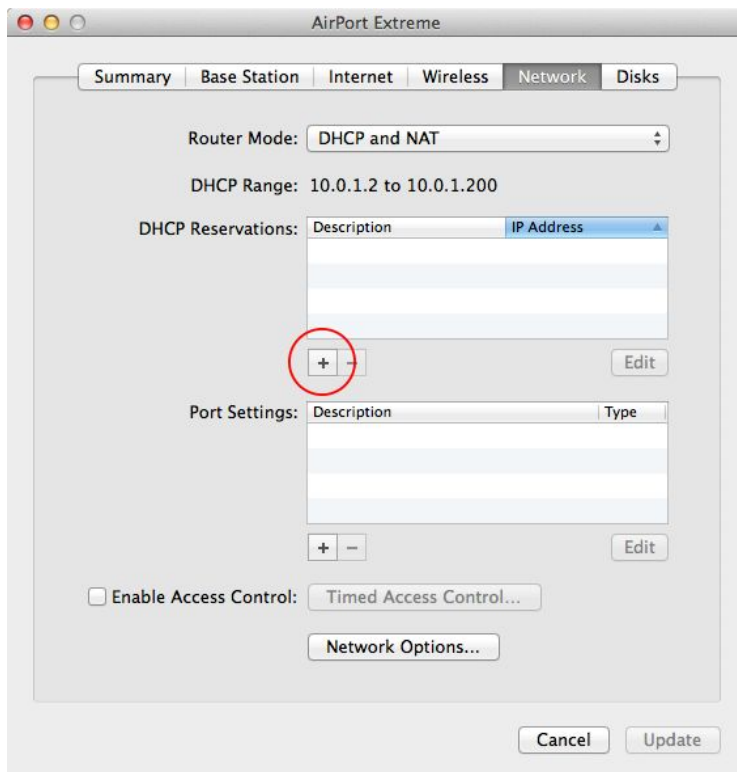


figure 2

Description: <enter the desired description of the host device> eg: **RainMachine Device**

Reserve address by: **MAC Address**

MAC Address: <RainMachine`s MAC Address> eg: **64:70:a6:34:65:12**

Note: To easily find your RainMachine Device MAC Address go to the device tap on Settings led button, tap the Advanced tab, then tap on Updates tab and the Updates screen will open. On this screen you can find the RainMachine Device MAC Address.

IPv4 Address: <enter the desired Private (LAN-side) IP address that you want to reserve from the DHCP pool of addresses> eg: **10.0.1.2**

Click **Save** button (see figure 3 and figure 4)

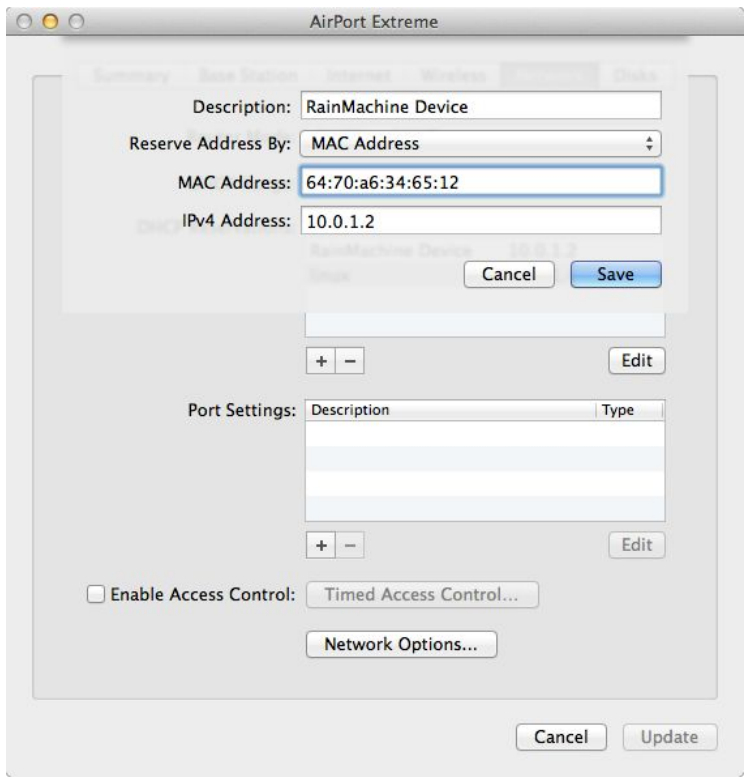


figure 3

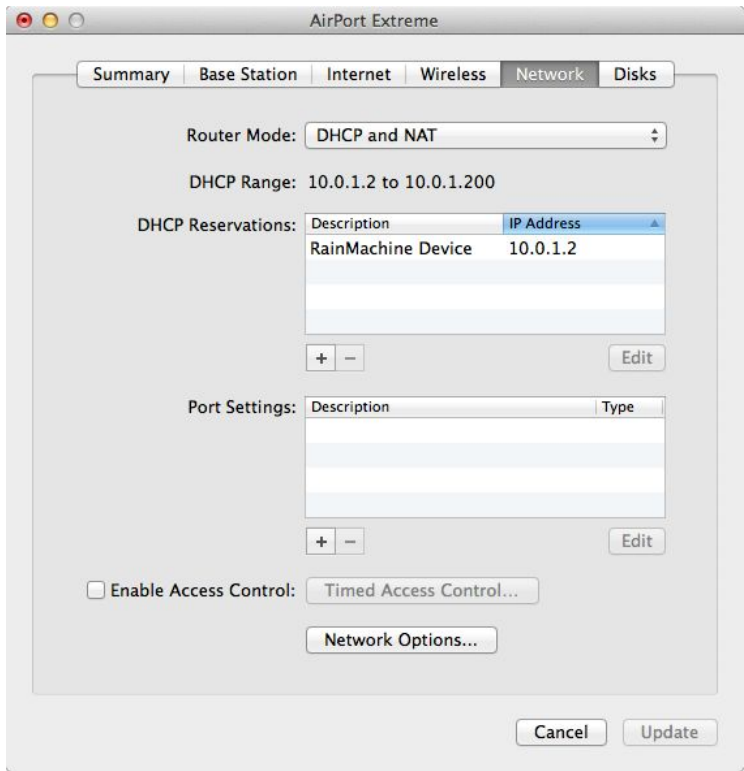


figure 4

Step 2

Setup port mapping on the base station.

Click the Add + button under **Port Settings**:

(see figure 5)

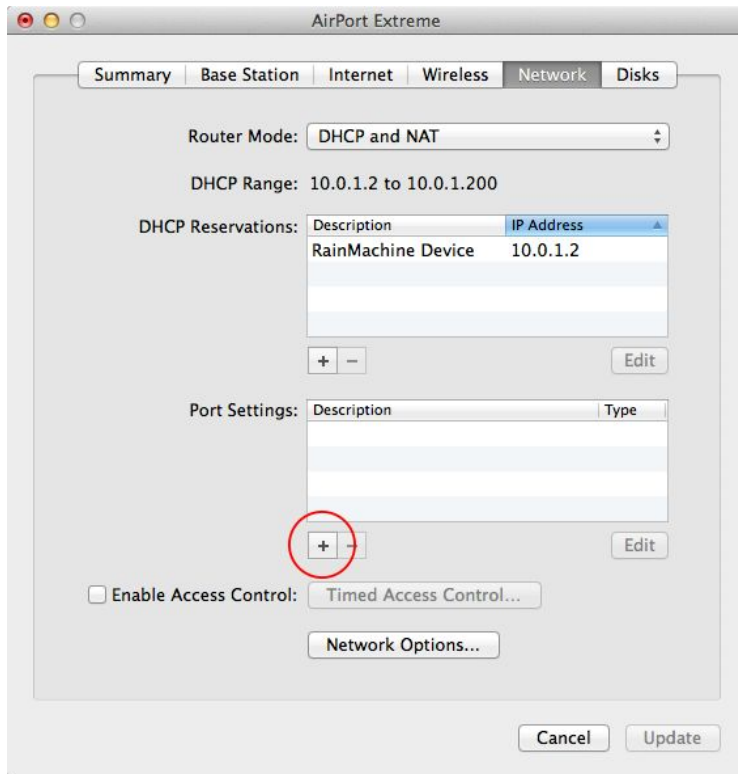


figure 5

Description: **RainMachine HTTPS**

Public UDP Ports: **443**

Public TCP Ports: **443**

Private IP Address: **<enter the reserved IP address of the host device (from Step 1)>**
eg: **10.0.1.2**

Private UDP Port(s): **443**

Private TCP Port(s): **443**

Click **Save** button

(see figure 6)

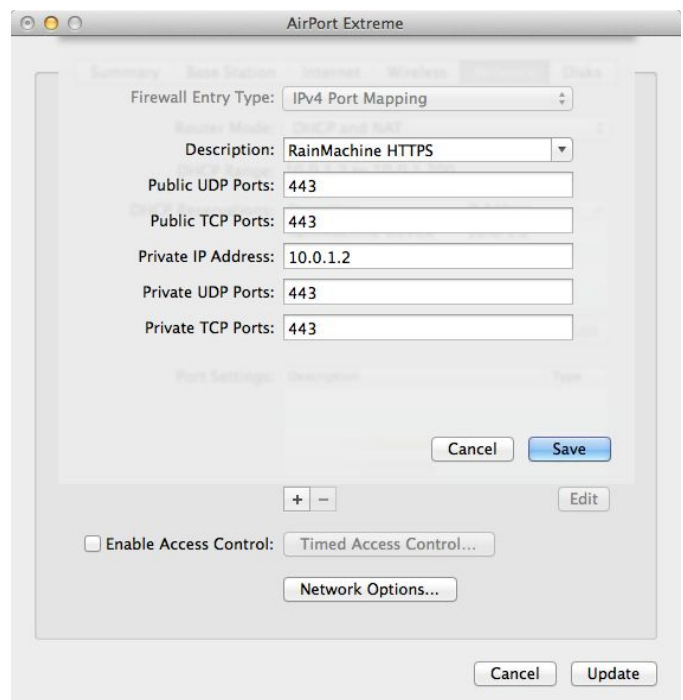
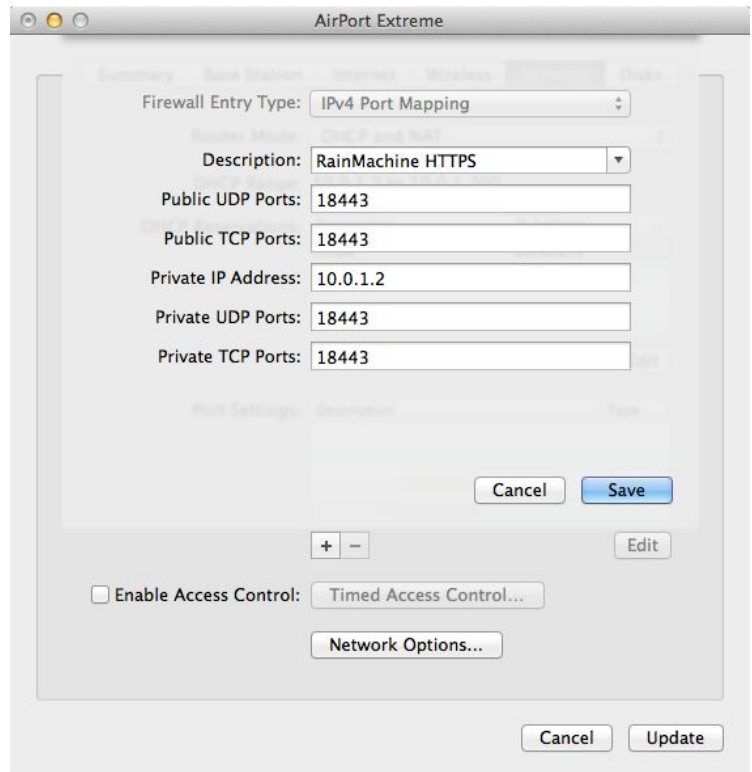


figure 6

If you have other services that uses the Public UDP and TCP 443 port, correct as follows:

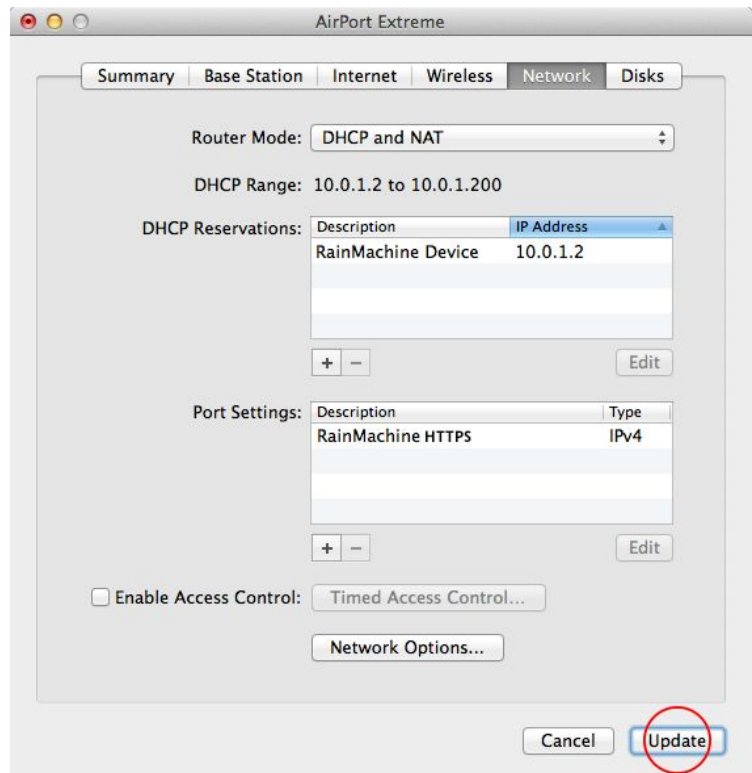
Description: **RainMachine HTTPS**
Public UDP Ports: **18443**
Public TCP Ports: **18443**
Private IP Address: **<enter the reserved IP address of the host device (from Step 1)>**
eg: **10.0.1.2**
Private UDP Ports: **18443**
Private TCP Ports: **18443**
(see figure 7)

figure 7



Click **Update** button to save all the settings you just made (see figure 8).

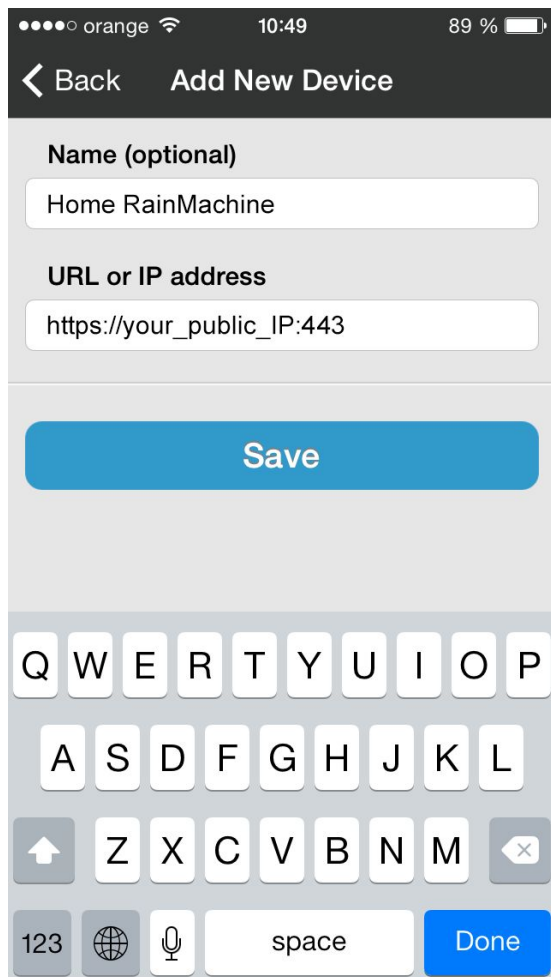
figure 8



Step 3

Test the port forwarding on your Apple Airport Extreme

After you setup the port forwarding on your Apple Airport Extreme using the Airport Utility application, use the following URL in your browser (Chrome or Safari) or in your smartphone RainMachine iOS/Android application under the **Add New Device** section on **Devices** screen (see figure 9):



https://your_public_IP:443
(or *https://your_public_IP:18443*).
You may find out your public IP by visiting
<http://ipaddress.com/>

figure 9

After you added the remote RainMachine device, test the connection by tapping its name on the **Devices** list (see figure 10). If the **Login** screen will show up, your connection is working.

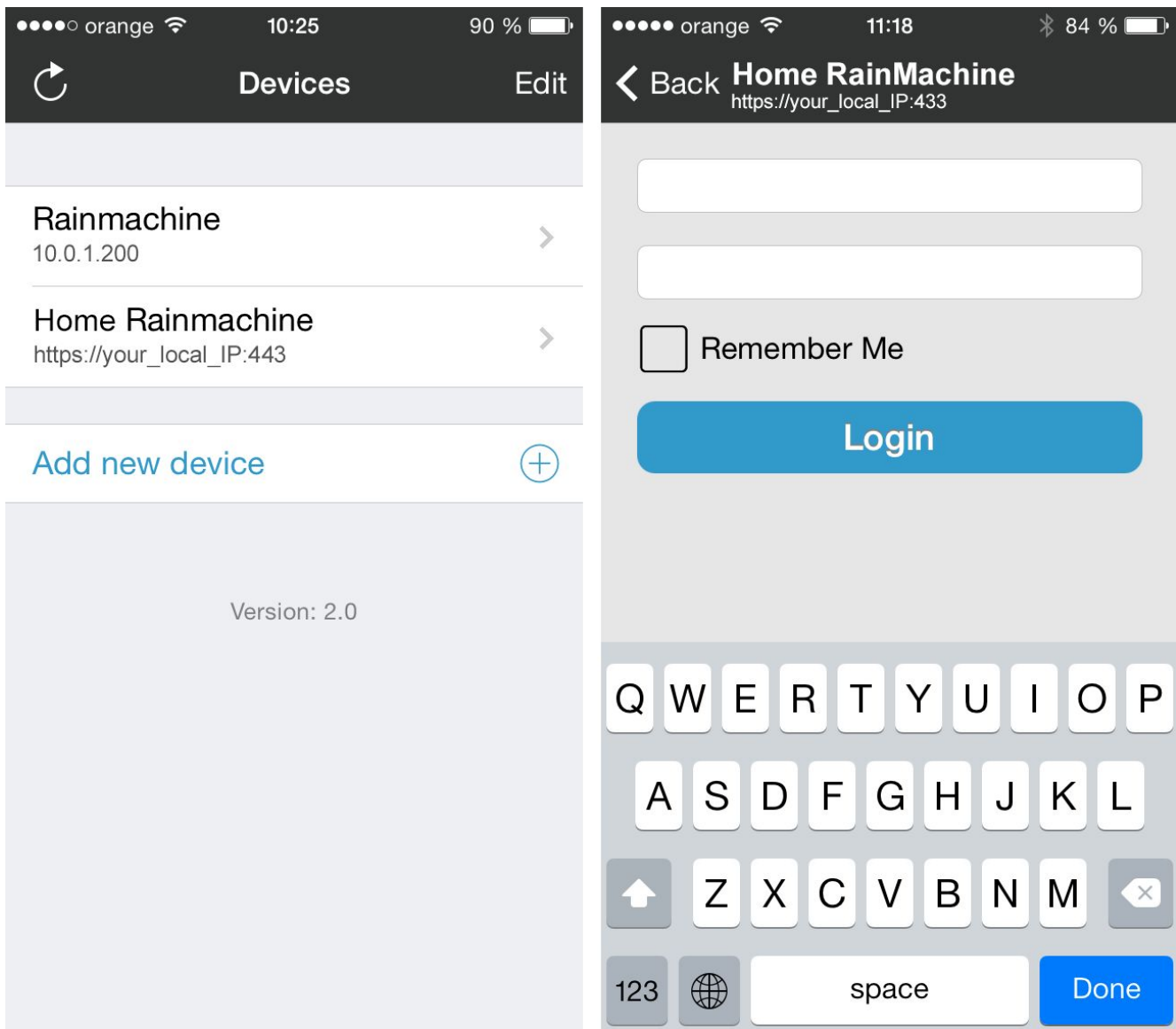


figure 10